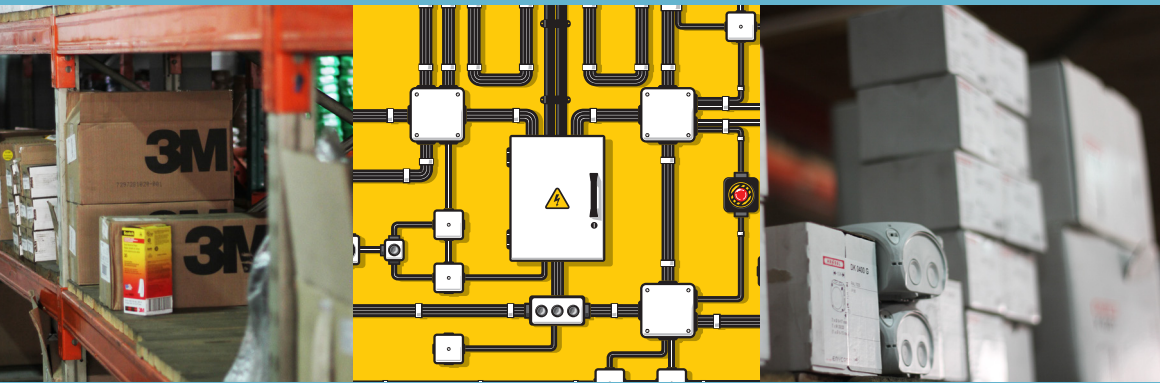


SOLUTIONS



DK Cable Junction Boxes



Construction

Cable entry via integrated elastic membranes or metric knockouts. With elastic membranes, which can be removed for cable entry via cable glands. Multi-level knockouts for cable glands in different sizes. Degree of protection: IP 66

Applications

For indoor installation in industrial and commercial buildings. Safe in industrial and commercial applications with demanding and tough environments

Packaging

Per unit.

Specification

Material	Polypropylene or polycarbonate
Burning Behaviour	Glow wire test in accordance with IEC 60695-2-11: 750°C Flame Retardant and Self-Extinguishing
Colour	Grey RAL 7035
Resistance to impact	IK 07 (2 Joule)



KF Cable Junction Boxes



PASSION FOR POWER.

Construction

Cable entry via metric knockouts. Degree of protection: IP 66 / IP 67 / IP 69 with cable glands as accessories, temporary submersion up to 1 meter, max 15 minutes. Comply with the regulatory restrictions for buildings with requirements regarding the structural fire protection DIN VDE 0100 Part 482 (German Standard)

Applications

Weatherproof, for unprotected outdoor installation in harsh environment and offshore applications. Robust and weatherproof - for offshore applications and use outdoors in harshest conditions of industrial and commercial applications

Packaging

Per unit.

Specification

Material	PC-GFS polycarbonate
Burning Behaviour	Glow wire test in accordance with IEC 60695-2-11: 960°C Flame Retardant and Self-Extinguishing
Colour	Grey RAL 7035 or Black RAL 9011
Resistance to impact	IK 09 (10 Joule)
Halogen-Free	Low toxicity, low fume development
Weatherproof	UV-resistant, Rainwater-proof, temperature-resistant, saltwater-proof
VDE Tested	DNV GL - Certificate No.: TAE00000EE, Russian Maritime Register of Shipping documentation-No.: 250-A-1180-108795



WP Cable Junction Boxes



Construction

Cable entry via metric knockouts. Degree of protection: IP 68 with submersion up to 20 meters, 168 hours. The quantity of the sealing compound is always matched to the product - never too much or too little material during processing. The lid can be removed for inspection purposes, the sealing compound can be easily removed for subsequent installations or inspections.

Applications

Waterproof, for encapsulation. For outdoor installation and use in harsh environmental conditions with risk of condensation and ingress of water as well as for ground installation without traffic loads

Packaging

Per unit.

Specification

Material	PC-GFS polycarbonate
Burning Behaviour	Glow wire test in accordance with IEC 60695-2-11: 960°C Flame Retardant and Self-Extinguishing
Colour	Grey RAL 7035 or Black RAL 9011
Resistance to impact	IK 09 (10 Joule)



FK Cable Junction Boxes

Construction

Cable entry via metric knockouts and grommets. Intrinsic fire resistance in accordance with DIN 4102 Part 12 (German standard) in combination with function-retaining cables. Insulation integrity PH120 in accordance with BS EN 50200 in combination with insulation retaining cables. Screw anchors, high-temperature-resistant ceramic terminal E30 up to E90 and cable entries included as standard. Multi-level knockouts for cable glands in different sizes. Cable junction box for large cable cross sections up to 50mm²

Applications

For buildings with public traffic, to guarantee the emergency power supply in the event of a fire.

Packaging

Per unit.

Specification

Material	PC-GFS polycarbonate
Burning Behaviour	Glow wire test in accordance with IEC 60695-2-11: 960°C Flame Retardant and Self-Extinguishing
Colour	Orange RAL 2003
Resistance to impact	Insulating material / thermoplastic: IK 09 (10 Joule) Sheet steel, powder-coated: IK 10 (20 Joule)
Degree of Protection	Insulating material / thermoplastic: IP 66 Sheet steel, powder-coated: IP 66
Protection against electric shock	Insulating material / thermoplastic: Insulated Sheet steel, powder-coated: Earthed





Scotch® 1710 - PVC Electrical Tape

Stock No.	Description	Thickness	Size
UE555571343	Black General Purpose PVC Electrical tape.	0.18mm	18mm x 20m
UE555571350	Yellow General Purpose PVC Electrical tape.	0.18mm	18mm x 20m
UE555571368	Red General Purpose PVC Electrical tape.	0.18mm	18mm x 20m
UE555571376	White General Purpose PVC Electrical tape.	0.18mm	18mm x 20m
UE555571384	Green General Purpose PVC Electrical tape.	0.18mm	18mm x 20m
UE555571392	Blue General Purpose PVC Electrical tape.	0.18mm	18mm x 20m



Features

- Good quality general use polyvinyl chloride (PVC) tape.
- High dielectric strength, is conformable and provides very good mechanical protection with minimum bulk.
- Flame retardant; SANS 122 compliant - SABS Tested.
- Excellent resistance to abrasion, moisture, alkalis, acid, UV light and varying weather conditions.
- Suitable for voltages of up to 600V and continuous operating temperatures of 80°C.
- Available in six colours.

Applications

- Economical SABS tested general use tape.
- Primary electrical insulation for all wire and cable joint repairs.
- Protective jacketing, harnessing and bundling for cables.

Scotch® Super 33+ - High Quality PVC Tape

Stock No.	Description	Thickness	Size
80610138911	Black Premium grade all weather vinyl insulation tape. Suitable for high and low temperature applications.	0.178mm	19mm x 20m



Features

- High quality premium polyvinyl chloride (PVC) tape.
- Very high dielectric strength and highly conformable.
- It is UL 50 listed and marked per UL Standard 510 as "Flame Retardant, Cold and Sunlight Resistant". Conforms to BS3924 and EU RoHS Compliant.
- SANS 122 compliant and SABS Tested. Certified as a VDE Type 5 PVC tape.
- Highly conformable, super stretchy in all weather applications, resists UV rays, abrasion, corrosion, alkalis and acids.
- Suitable for voltages of up to 600V.
- Maximum operating temperature of 105°C as per CSA - C22.2 No. 197-M1983.
- Available in Black.

Applications

- High quality tape for use in industrial and mining environments.
- Effective primary insulation of up to 600V and suitable for secondary insulation tape.
- Effective as a protective jacketing against moisture, UV, abrasion, corrosion, alkalis and acids.

Scotch® 35 - High Quality PVC Tape Multi Colour

Stock No.	Description	Thickness	Size
80014000550	White Fade resistant tape.	0.178mm	19mm x 20m
80014000519	Red Fade resistant tape.	0.178mm	19mm x 20m
80014000543	Yellow Fade resistant tape.	0.178mm	19mm x 20m
80014000584	Green Fade resistant tape.	0.178mm	19mm x 20m
80014000527	Blue Fade resistant tape.	0.178mm	19mm x 20m



Features

- High quality premium polyvinyl chloride (PVC) colour-coding fade-resistant tape.
- Very high dielectric strength, highly conformable super stretchy in all weather applications; resists UV rays, abrasion, corrosion, alkalis and acids.
- Flame retardant and has low smoke emission; SANS 122 compliant - SABS Tested. Conforms to BS3924 and UL510.
- Suitable for voltages of up to 600V.
- Maximum operating temperature of 105°C as per CSA - C22.2 No. 197-M1983.
- Available in nine colours.

Applications

- Suitable for industrial and mining environments.
- Primary insulation for splices up to 600V, protective jacketing.
- Excellent for us in phase identification and marking, harnessing, colour coding of motor leads, piping systems and marking safety areas.



Scotch® 23 - Self Fusing Insulation Tape

Stock No.	Description	Thickness	Size
H0001724667	Self-amalgamating EPR (Ethylene Propylene Rubber) based high voltage joining tape. For joints up to 69kV.	0.76mm	19mm x 9.15m



Features

- Physical and electrical properties unaffected by degree of stretch.
- Can be stretched up to 100% to give void free, moisture resistant insulation.

Applications

- Self-amalgamating tape with excellent electrical properties.
- Primary electrical insulation for cable jointing and terminating up to 69kV at 90°C continuous operating temperatures and 130°C emergency overload temperatures.

Scotch® 27 - Glass Cloth Tape

Stock No.	Description	Thickness	Size
80610781918	Woven glass cloth tape.	0.178mm	19mm x 20m



Features

- Glass will not shrink rot or burn and has high tensile stress.
- Designed for continuous use at 130°C with high temperature thermosetting adhesive.

Applications

- Applications requiring high mechanical strength and resistance to high temperatures.
- Heat stable insulation for furnace and oven controls, motor leads and switches.

Scotchfill® - Electrical Insulation Putty

Stock No.	Description	Thickness	Size
UT100000934	Electrical grade insulation compound in tape form.	3.175mm	38mm x 1.5m



Features

- Non-corrosive, synthetic rubber that will not dry out.
- Applies cleanly without waste.

Applications

- To build up cable joints and fill out major irregularities and voids in low voltage joints (<2300V).
- To insulate low-voltage (<600V) connections.
- To create moisture seal in high-voltage joints and for multi-conductor cable connections.
- To round out high-voltage connections to gear.
- To smooth busbar irregularities.

Scotch® 24 - Electrical Shielding Tape

Stock No.	Description	Size
BC000000887	All-metal, open-weave, shielding braid tape in a flat, cable-like form.	25mm x 4.5m



Features

- Fire resistant.
- Compatible with all high-voltage splicing and termination materials.

Applications

- To provide shielding for cable joints on shielded power cables.
- To make the conductive portion of the stress cone on power cable terminations.
- To smooth connector area in oil-filled cables.

Scotchrap® Tapes 50, 51 and Pipe Primer

Stock No.	Description	Size
UE000092648	Polyvinyl chloride based tapes with special high tack adhesives	24mm x 30.5m
UE000092663	Polyvinyl chloride based tapes with special high tack adhesives	48mm x 30.5m
UE000092705	Polyvinyl chloride based tapes with special high tack adhesives	96mm x 30.5m



Features

- Resistant to corrosive salt water, soil acids, alkalis and salts, common chemicals, chemical vapors and exposure to outdoor weathering and sunlight.

Applications

- The Scotchrap Tapes 50 and 51 are easy to apply without special tools or dangerous flame.

TAPES



Scotch® 70 - Silicone Rubber Tape

Stock No.	Description	Thickness	Size
UE100053029	Silicone Rubber Electrical tape.	0.3mm	25mm x 9m



Features

- Excellent track, ozone & arc resistance. High dielectric strength.
- Class "H" material (180°C continuous operation).
- Workable in extremely low temperatures.
- Excellent conformability.
- Excellent instantaneous fusion, does not need to be held down.

Applications

- As an Over-wrap for protection of terminating high-voltage cables against arcing and tracking.

Scotch® 13 Tape - Semi Conducting EPR

Stock No.	Description	Thickness	Size
UE100000947	Soft Black rubber tape highly conformable.	0.762mm	19mm x 4.5m



Features

- Remains stable at 130°C and is non-vulcanising.
- Elongates easily to form irregular shapes.
- Resist cracking, solvents, U.V and moisture.
- Tape and liner boldly printed to distinguish from insulating tape.
- Meets requirements of ADTM-D4388, Type IV.

Applications

- Electricity rounds-off high voltage connectors and lugs.
- Provides screen continuation for high voltage joints and terminations.
- Replaces semi-conducting layer beneath metallic shield of damaged cables.
- Forms conductive portion of stress cones.

Scotch® 77 Tape - Fire Retardant and Electric Arc Proofing Tape

Stock No.	Description	Size
HC000602306	Non-adhesive, Intumescent Elastomer.	76mm x 6.1m



Features

- Flexible unsupported elastomer - clean, easy to apply, eliminates cuts and contusions of hands.
- Conformability provides wrinkle-free wrapping and complete coverage with minimum effort.

Applications

- Designed to protect most types of electrical cables when exposed to potential failures in an adjacent cable.
- Specifically formulated adhesive expands in fire to form a thick char buildup between the flame and the cable. The resulting firewall acts as a heat shield and flame barrier, thus protecting the nearby cables and accessories.

Scotch® 2220 - Stress Tape

Stock No.	Description	Thickness	Size
UE333346406	Mastic Stress Tape	0.76mm	18mm x 4.8m



Features

- Scotch® 2220 Stress Control Type changes the voltage distribution in electrical field surrounding medium voltage joints or terminations.
- Range of Temperature: Continuous operating temperature 90°C: Emergency operating temperature: 130°C.

Applications

- Stress control in medium voltage joints and terminations; ines of flux are regulated to equalize the electrical stresses in a controlled manner along the entire taped joint or termination area where the shielding has been re-moved. By changing the electrical field surrounding the joint or termination, the stress concentration is reduced from several thousand volts to values found in continuous cable.

COMFORT GRIP GLOVES

Code	Size
WX300921193	Large
WX300921201	X-Large

Characteristics

- Exceptional comfort and breathability : Thin foam coating provides high breathability for maximum comfort.
- Flexibility: Fine gauge knit nylon liner provides flexibility and padding.
- High Durability: Unique nitrile formula offers resistance to abrasion.
- Machine washable.



LOW VOLTAGE CABLE JOINTS



Scotchcast™ Low Voltage Resin Splicing Kits up to 1.1kV - 82 Series

Stock No.	Description	Size
UE000156427	Scotchcast™ 82-A1 LT Epoxy resin splicing kit.	Cable 2.5-4mm ²
UE000156435	Scotchcast™ 82-A2 LT Polyurethane splicing kit.	Cable 6-16mm ²
UE000156443	Scotchcast™ 82-A3 LT Polyurethane splicing kit.	Cable 25-35mm ²



Features

- It utilizes a slim line mould with a two part amber transparent epoxy (82-A1) / Polyurethane (82-A2/3) resin with excellent chemical, mechanical and electrical properties.
- Resin stable up to 1100V : does not run once cured.
- Resin meets SABS 526 and SABS 150 standards. Kits meet VDE 0278, BS 6910 and are SABS Tested.
- Rated up to 1.1KV.
- Unaffected by solvents, ozone, UV light and moisture.
- Tried and tested in local environment for over 30 years.
- SABS performance test reports available on request.

Applications

- The Scotchcast™ 82 A Series Low Voltage Resin joints are designed to be used for multi-core non-shielded polymeric low voltage electrical cables.
- Suitable for indoor and outdoor applications.
- Suitable for underground and submerged applications. Ideal for borehole application where space is limited.

Scotchcast™ Low Voltage Resin Splicing Kits up to 1.1kV - 91 Series

Stock No.	Description	Size
UE000189436	Scotchcast™ 91-A1 LT Polyurethane resin kit.	(8mm - 28mm) 4-10mm ²
UE000189311	Scotchcast™ 91-A2 LT Polyurethane resin kit.	(14mm - 32mm) 16-25mm ²
UE000189428	Scotchcast™ 91-A3 LT Polyurethane resin kit.	(23mm - 39mm) 35-50mm ²
UE000189451	Scotchcast™ 91-A4 LT Polyurethane resin kit.	(28mm - 51mm) 70mm ²
UE444458611	Scotchcast™ 91-A4,5 LT Polyurethane resin kit.	(30mm - 55mm) 95mm ²
UE000189444	Scotchcast™ 91-A5 LT Polyurethane resin kit.	(45mm - 70mm) 120-150mm ²
UE100084842	Scotchcast™ 91-A6 LT Polyurethane resin kit.	(48mm - 86mm) 185-240mm ²
UE555571236	Scotchcast™ 91-A7 Cold Shrink.	(50mm - 100mm) 300mm ²

Features

- It utilizes a "burge" type mould with a two part clear Scotchcast 460M polyurethane resin with excellent chemical, mechanical and electrical properties.
- Resin stable up to 1100V Degree Celsius: does not run once cured.
- Resin meets VDE 0291-2 and Cenelec Pr HD 631, SABS 526 and SABS 150 standards. Kits meet VDE 0278, BS 6910 and are SABS Tested.
- Rated up to 1.1KV.
- Tried and tested in local environments for over 30 years.

Applications

- The Scotchcast™ 91 A Series Low Voltage Resin joints are designed to be used for multi-core non-shielded polymeric low voltage electrical cables.
- Suitable for indoor and outdoor applications.
- Suitable for underground and submerged applications.

Scotchcast™ Low Voltage Resin Splicing Kits up to 1.1kV - 91W Series

Stock No.	Description	Size
UE444446053	Scotchcast™ 91-A1/W.	(8mm - 28mm) 4-10mm ²
UE444446061	Scotchcast™ 91-A2/W.	(14mm - 32mm) 16-25mm ²
UE444446079	Scotchcast™ 91-A3/W.	(23mm - 39mm) 35-50mm ²
UE444446087	Scotchcast™ 91-A4/W.	(28mm - 52mm) 70mm ²
UE989899096	Scotchcast™ 91-A4/WE with earthing kit.	(28mm - 52mm) 70mm ²
UE444458629	Scotchcast™ 91-A4,5/W.	(30mm - 55mm) 95mm ²
XZ005704097	Scotchcast™ 91-A4,5/WE with earthing kit.	(30mm - 55mm) 95mm ²
UE444446095	Scotchcast™ 91-A5/W.	(45mm - 70mm) 120-150mm ²
UE555564447	Scotchcast™ 91-A5WE with earthing kit.	(45mm - 70mm) 120-150mm ²
UE444446111	Scotchcast™ 91-A6/W.	(48mm - 79mm) 185-240mm ²



Features

- Refer to 91 Series Splicing Kits.
- Utilizes a flame retardant resin and mould.
- Unaffected by solvents, ozone, UV light and moisture. Resin is highly hydrolytically stabilized with low exothermic temperatures.
- Tried and tested in local environment for over 30 years.
- SABS performance test reports available on request.

Applications

- The Scotchcast™ 91 A W Series Low Voltage Resin joints are designed to be used for multi-core non-shielded polymeric low voltage electrical cables.
- Specifically designed for indoor and outdoor applications in environments that require maximum flame redundancy.
- Suitable for underground and submerged applications.

11kV COLD SHRINK CABLE JOINTS



3 Core 11kV Cold Shrink Splice Kits for XLPE Cables

Stock No.	Description	Resin Type	Insulation OD	Size
3M-76458	MVX1-FR splicing kit for XLPE.	52FR Flame retardant	14.1-18.2mm	16-35mm ²
3M-76459	MVX2-FR splicing kit for XLPE.	52FR Flame retardant	18.0-33.4mm	50-120mm ²
3M-76460	MVX3-FR splicing kit for XLPE.	52FR Flame retardant	22.6-41.3mm	150-300mm ²



Kit Contents

- Ferrule tubes.
- Earthing materials.
- Disposable resin dispensing materials.
- High-K mastic and 2228 tape.
- Rejacketing materials.
- Scotchcast 52FR resin.

Features & Benefits

- Cold shrink installation.
- EPDM rubber.
- Good dielectric strength.
- Kit accommodates wide cable range.
- Slim design - ideal for rack installations.
- Resin filled.
- Each kit is supplied with step-by-step instruction including pictures.
- Suitable for all cable and connector types.
- Continuous radial pressure ensures a tight natural seal.
- Easy, safe and quick installation.
- No special tooling or heating required.

11kV COLD SHRINK CABLE TERMINATIONS

3 Core 11kV Cold Shrink Termination Kits for XLPE Cables with Earthing Kits

Stock No.	Description	Area of use	Size
3M-51780	1001 LC-B indoor termination kit.	Indoor, Low Contamination.	25-50mm ²
3M-51780	1002 LC-B indoor termination kit.	Indoor, Low Contamination.	70-120mm ²
3M-51780	1003 LC-B indoor termination kit.	Indoor, Low Contamination.	150-185mm ²
3M-51780	1001 HC-B outdoor termination kit.	Outdoor, High Contamination.	25-50mm ²
3M-51780	1002 HC-B outdoor termination kit.	Outdoor, High Contamination.	70-120mm ²
3M-51780	1003 HC-B outdoor termination kit.	Outdoor, High Contamination.	150-185mm ²



Features

- 1000 series termination kits were designed to terminate 11kV 3-core XLPE cables.
- Silicone rubber Cold Shrink tubes are used over the cores and a Cold Shrink sheath seal resembling a three fingered glove to divide the crutch of the termination.
- The kit also includes: High-K stress control tube, Scotch No.13 and 33 tapes, putty, and TR cable preparation kit.
- Detailed instructions are supplied with the kit.

